



How To: Use Syslog

Issue Date: 01/03/07

1.0 Overview

This document provides instructions and information on how to use the Syslog server for troubleshooting purposes.

The following topics are presented in this document:

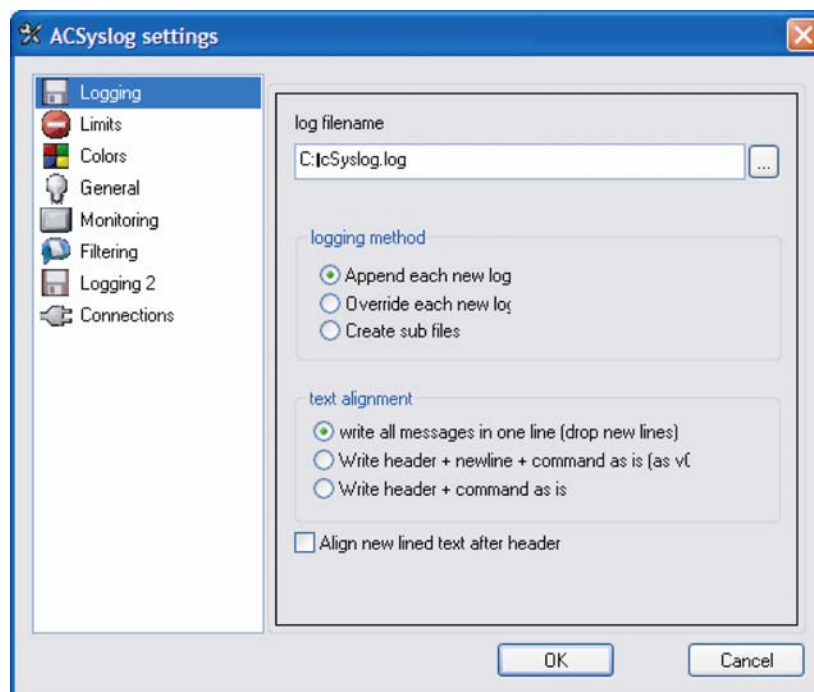
- Installing Syslog on monitoring PC
- Using the AudioCodes Web Server to run Syslog on the hardware

NOTE: This document was written using v4.8 software.

2.0 Installing Syslog

Syslog software is available in the Utilities folder on the Online support system. Users can run the software and copy it to the computer that will be used to monitor the AudioCodes board. This software is used to view the data written to the Syslog report.

Using the Navigation Menu at the top, select the Options > Settings links. Use this screen to set the name and location of the log file (the log file is saved to the computer running the Syslog software).






3.0 Running Syslog

Syslog must now be started on the AudioCodes hardware device that is to be monitored.

1. Access your board's web server: <http://xx.xx.xx.xx>
2. The default password and User Name are always: Admin.
3. Use the "Advanced Configuration" link on the left, and then select the "Management Settings" link on the top.
4. Enter the IP Address of the computer running the Syslog software.
5. Use the default Port number, unless your computer requires another value.
6. Enable the Syslog feature.
7. Use the **SUBMIT** button at the bottom of the screen.

Management Settings	
Syslog Settings	
Syslog Server IP Address	<input type="text"/>
Syslog Server Port	<input type="text" value="514"/>
Enable Syslog	<input type="text" value="Disable"/> 

Set the debug level:

1. Use the "Protocol Management" link on the left, and then select the "Advanced Parameters" link on the top to access the "General Parameters".
2. Set the debug level (1-6, 5 is recommended).
3. Use the **SUBMIT** button at the bottom of the screen.